

RCAB
www.rc-ab.se
info@rc-ab.se



essemtec.
swiss made



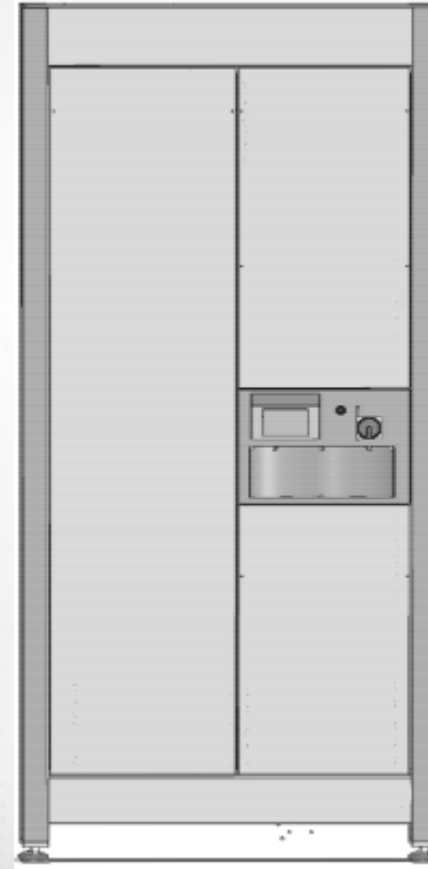
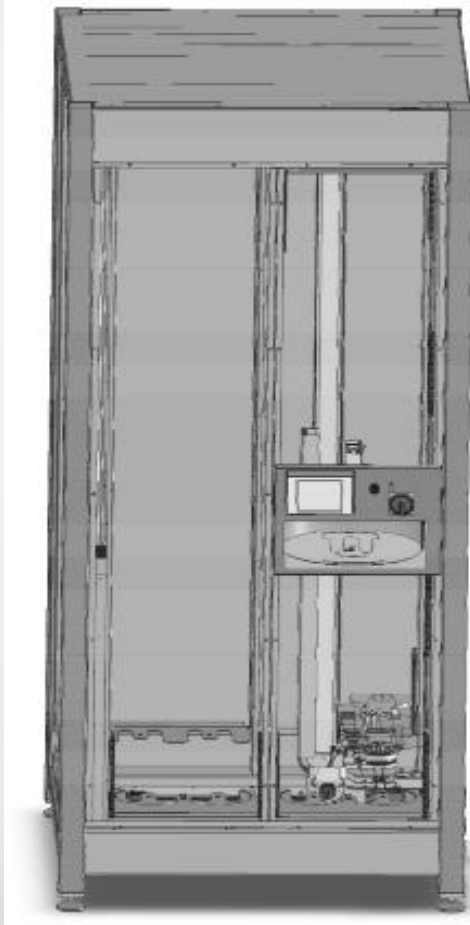
cubus.
SMD Storage System

cubus.

essemtec.
swiss made

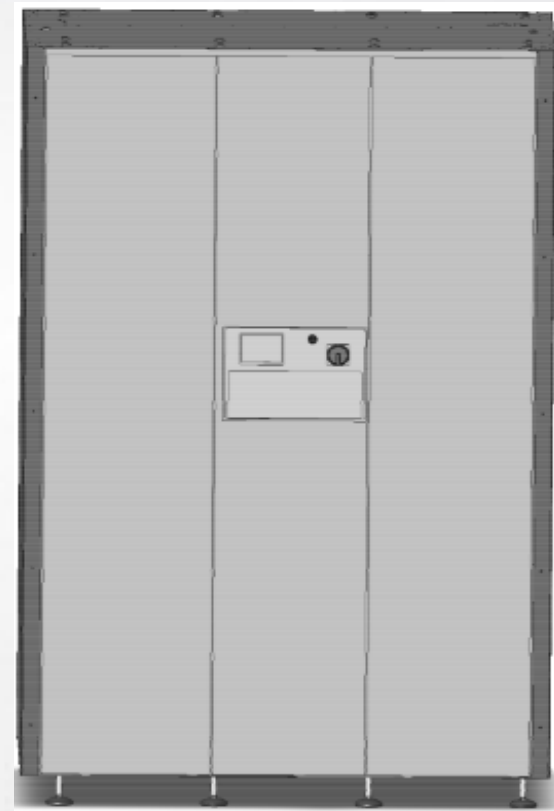
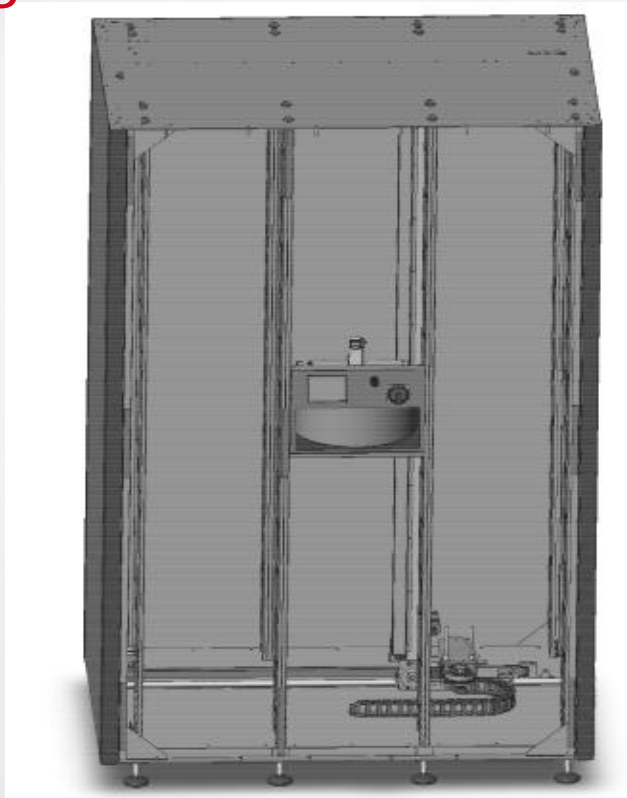


CUBUS Small



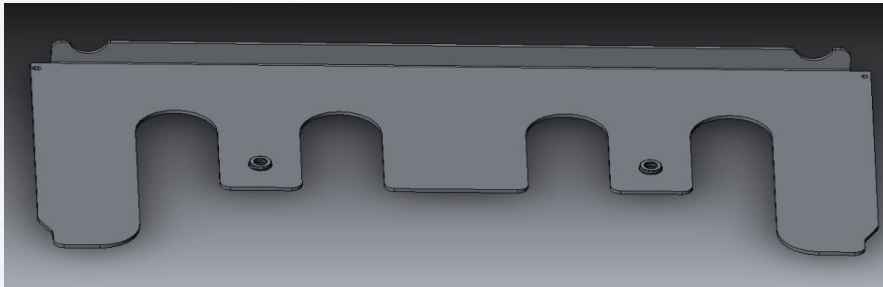
Dimension: 110x1080x2500 mm (w x d x h) Maximum capacity: 7" reels: 600

CUBUS Large

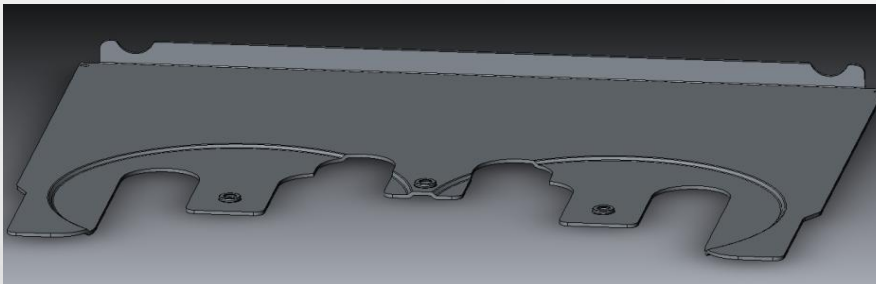


Dimension: 1560x1080x2500 mm (w x d x h)
Maximum capacity: 7" reels: 900

CUBUS 7" / 15" Shelves



⇒ 2x 7" Reels



⇒ 2x 7" Reels / 1x 15" Reel

eStorage

Super User
17:58 04. Feb 2014

Jobs

Job	Component list / Re	Quantity [PCB]	Product name	Order number	Customer
CeTaQ QFP2...	CeTaQ QFP208	0/1	CeTaQ QFP208		
DemoBoard...	DemoBoard_P&P...	3/250	DemoBoard_P&P		Essemtec
DemoBoard...	DemoBoard_P&P	100	DemoBoard_P&P		
Dispensing_...	DemoBoard_Disp...	45/250	DemoBoard_Disp...		
Manuel	PanelC	0/1	PanelC		
Manuel SubC	SubC	0/1	SubC		
Panel	PanelB	488/10000	PanelB	AB320159	Essemec

Bill of Material

Component List

Job

Multi Job

Stock Availability

eStorage

▶

?

✉

Edit

New

Load

Save

Delete

Multi jobs

Multi job	Jobs	Quantity [PCB]
Demoboard...	Dispensing_P&P,...	48/500

Multi job

Product name

Order number

Customer

Overview

Setup

Provide

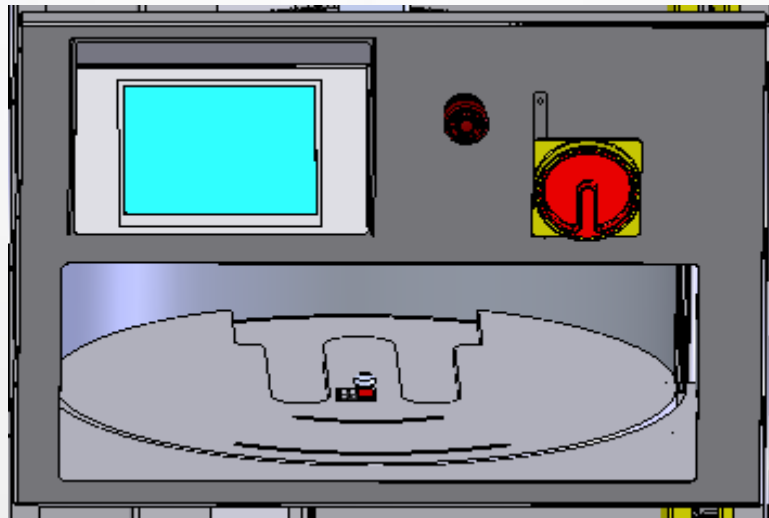
Stock

Statistics

System

Infopage

CUBUS Control Buttons and Display



- Control Buttons and status display with a 5.7" Touch screen

CUBUS Overview:

⇒ Dimensions:

⇒ **CUBUS SMALL:** 1110x1080x2500 mm (w x d x h)

⇒ **CUBUS LARGE:** 1560x1080x2500 mm (w x d x h)

⇒ Reel Dimensions:

⇒ **7" Stacks:** 7" Reels from 8-72mm

⇒ **15" Stacks:** 15" Reels from 8-72mm

⇒ Maximum capacity:

⇒ **CUBUS SMALL:** 7" reels: **600**

⇒ Mix of 7-15" reels: up to **300** 7" reels and **150** 15" reels.
(8mm tape only)

⇒ **CUBUS LARGE:** 7" reels: **900**

⇒ Mix of 7-15" reels: up to **450** 7" reels: and **220** 15" reels.
(8mm tape only)

CUBUS Overview:

- ⇒ Flexible shelves /stacks for reel storing, adjustable by customer
- ⇒ Automatic stack calibration
- ⇒ 5.7" Touch Screen
- ⇒ Automatic diameter and width detection
- ⇒ Automatic Scanning of Reel ID
- ⇒ 1 PC controls several Cubus
- ⇒ Automated pick-up and return to stock
- ⇒ Controlled Atmosphere < 5% humidity (Option)

Following models are planned:

Part. No.	Description
Cubus-Small-R	Automatic storage system for components (SMD Tower), for maximum 600 7" reels, with standard configuration of shelves for 282 reels,
Cubus-Small-M	Automatic storage system for components (SMD Tower), for maximum 600 7" reels, with standard configuration of shelves for 406 reels,
Cubus-Small-L	Automatic storage system for components (SMD Tower), for maximum 600 7" reels, with standard configuration of shelves for 600 reels,

Part. No.	Description
Cubus-Large-R	Automatic storage system for components (SMD Tower), for maximum 900 7" reels, with standard configuration of shelves for 426 reels,
Cubus-Large-M	Automatic storage system for components (SMD Tower), for maximum 900 7" reels, with standard configuration of shelves for 614 reels,
Cubus-Large-L	Automatic storage system for components (SMD Tower), for maximum 900 7" reels, with standard configuration of shelves for 900 reels,

CUBUS Small Configuration

CUBUS-Small-R

Reel diameter	Tape width	Max. Reels
7" Reels	8 mm	282
	12 mm	282
	16 mm	282
	24 mm	90
15" Reels	8 mm	45
	12 mm	45
	16 mm	45
	24 mm	45
	32 mm*	45
	44 mm,	45
	56 mm	45

CUBUS-Small-L

Reel diameter	Tape width	Max. Reels
7" Reels	8 mm	600
	12 mm	0
	16 mm	0
	24 mm	0
15" Reels	8 mm	150
	12 mm	0
	16 mm	0
	24 mm	0
	32 mm*	0
	44 mm,	0

CUBUS-Small-M

Reel diameter	Tape width	Max. Reels
7" Reels	8 mm	406
	12 mm	406
	16 mm	150
	24 mm	150
15" Reels	8 mm	75
	12 mm	75
	16 mm	75
	24 mm	75
	32 mm*	0
	44 mm,	0

CUBUS Large Configuration

CUBUS-Large-R

Reel diameter	Tape width	Max. Reels
7" Reels	8 mm	426
	12 mm	426
	16 mm	426
	24 mm	138
15" Reels	8 mm	69
	12 mm	69
	16 mm	69
	24 mm	69
	32 mm*	69
	44 mm,	69

CUBUS-Large-L

Reel diameter	Tape width	Max. Reels
7" Reels	8 mm	900
	12 mm	0
	16 mm	0
	24 mm	0
15" Reels	8 mm	230
	12 mm	0
	16 mm	0
	24 mm	0
	32 mm*	0
	44 mm,	0

CUBUS-Large-M

Reel diameter	Tape width	Max. Reels
7" Reels	8 mm	614
	12 mm	614
	16 mm	230
	24 mm	230
15" Reels	8 mm	115
	12 mm	115
	16 mm	115
	24 mm	115
	32 mm*	0
	44 mm,	0

CUBUS Configuration

Part. No.	Description
Tower-D	Language Option German
Tower-E	Language Option English
Tower-230V	Power Option 230V
Tower-110V	Power Option 110V

Part. No.	Description
Tower-ISC	Individual shelf configuration
Tower-7	Additional 7" shelf
Tower-15	Additional 15" shelf

CUBUS Hardware Options

Part. No.	Description
Tower-TH	Temp Humidity Control
Tower-N	Nitrogen Control
Tower-DRY	Air dry system
Tower-DRY-CARE	Service Pack Air dry system Consists of: <ul style="list-style-type: none">- Pre-filter element- After filter element- Gasket set- Set of wear parts- Drying agent cartridge
Tower-2D	2D Barcode Scanner

CUBUS Software Options



Part. No.	Description
Tower-eStorage	eStorage Software
Tower-eStorage-ADD	eStorage License for 1 Tower

CUBUS Scanner Options



Part. No.	Description
Tower-BAR	Barcode reader with USB cable
Tower-BAR-2D	Data Matrix code scanner incl. USB cable
Tower-BAR-2D-F	Radio Data Matrix Code scanner incl. USB receiver

CUBUS Hardware Options

Part. No.	Description
Tower-PC-D	PC incl. 22" LCD-Monitor , Keyboard and Mouse (German)
Tower-PC-E	PC incl. 22" LCD-Monitor , Keyboard and Mouse (English)

CUBUS Printer Options

Part. No.	Description
Tower-PRI	Bar Code Label Printer (300 dpi) incl. 1500 component lables and one ribbon
Tower-PRI-LC	Bar Code Label Printer (300 dpi) incl. 1500 component labels, one ribbon, Print Mode: Thermo direct only



CUBUS Packing

Part. No.	Description
Tower-Pack	Packing for truck or airfreight transportation
Tower-Pack2	Packing for sea freight transportation