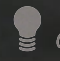
 Prototyping

 Low Volume

 Mid Volume

 High Volume

 Customized Solutions

# fino.

SEMI-AUTOMATIC FINE-PITCH PRINTER WITH VISION

**RCAB**

+46 (0) 70 582 04 51  
info@rc-ab.se  
www.rc-ab.se

essemtec.

be more flexible

# FINO

**Dual camera vision system**  
for precise alignment

**Fast product change-over** and  
stencil cleaning by tiltable upper frame

**Pneumatic clamps**  
for frame fixation



**Easy to use**  
by touch screen

**Motor-driven double squeegee system**  
with independent print force adjustment

**Through-stencil position adjustment**  
for highest printing accuracy

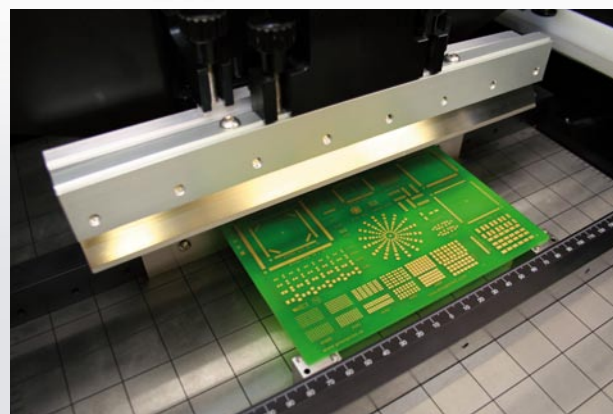
Compact footprint  
**table-top or stand-alone**

## ***Professional printing in a tabletop format***

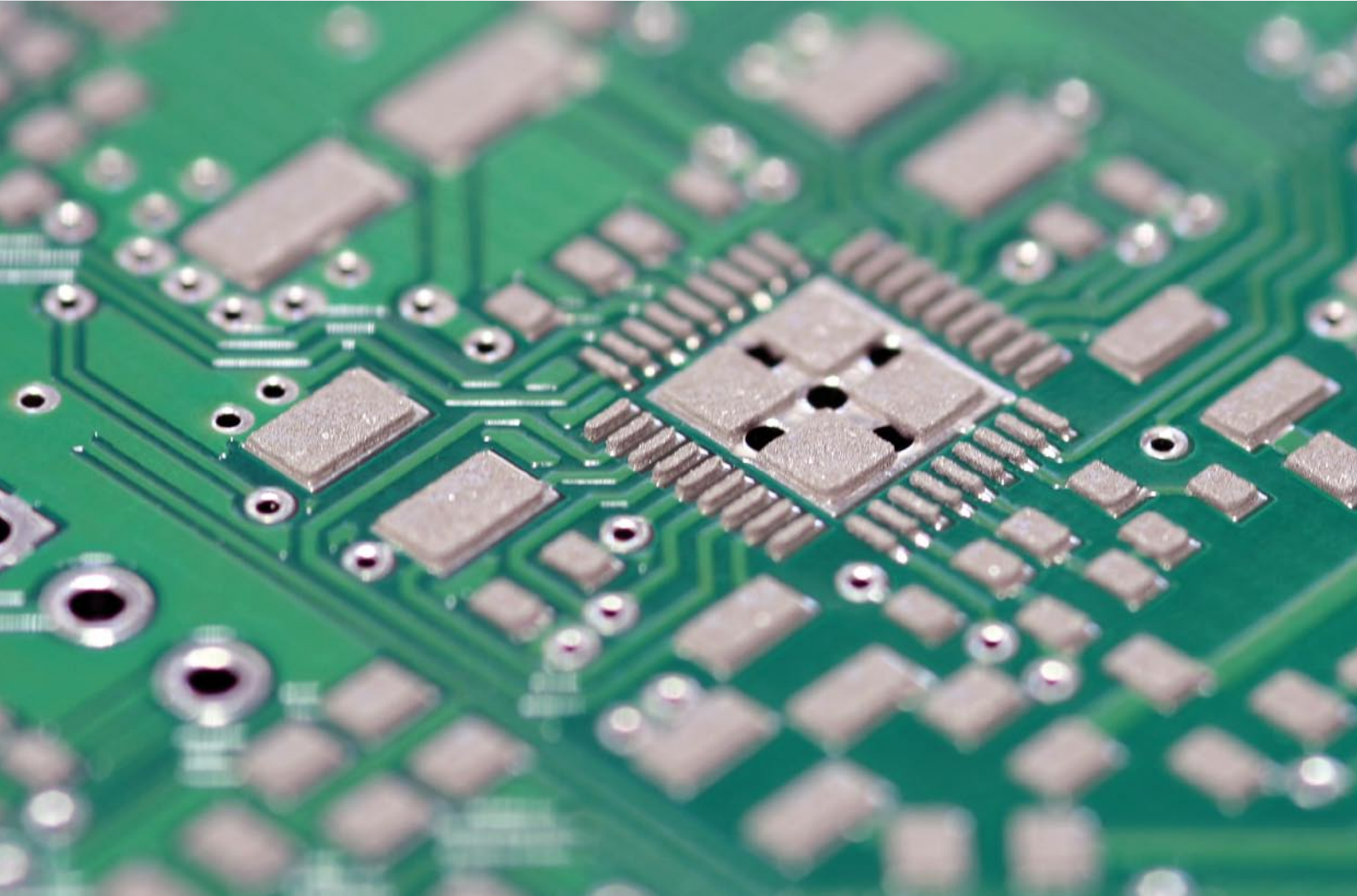
*“The key requirements for today’s printer market are highest accuracy combined with the capability of repetitive printing - even for low and midsize volumes.”*

Printing of solder paste or adhesive is one of the most important steps in the SMT production chain. The final quality of the PCB can only be as good as the quality of the initial solder paste deposits. However, the trend toward smaller lead pitches and components makes it more difficult to achieve accurate, unflawed and perfectly printed PCB's. This requires a high-quality, precise printer that can handle small, midsize or high volumes.

Compact, precise and exceptionally easy to use: These are the characteristics of Fino, the semiautomatic screen/stencil printer from Essemtec. The programmable precision printer can be placed on a table, making it ideally suited for smaller, flexible production. Optionally, the printer is available mounted on a robust steel stand.



PERFECT RESULTS



## ***High-tech engineering for total flexibility and perfect results***

The following features differentiate Fino from other tabletop printers: A touch screen programming terminal, laser-guided vision alignment, and a pneumatic fast-fixation for screen and stencil tension frames. Furthermore, all motions of the squeegee and the print table are motorized and,

therefore, are both programmable and reproducible. Because of these features, Fino's setup and changeover is much quicker than other machines and the print quality is better. The Fino prints on single- and double-sided PCBs, ceramics and, foils — through the use of the vacuum

table. It supports different PCB thickness from 0.1 up to 10.0 mm without changing basic machine parameters. A specialty of the Fino is its capability to provide borderless printing on substrates up to 450 x 500 mm. Screen and stencil tension frames up to 23" can be mounted.

EASY TO USE

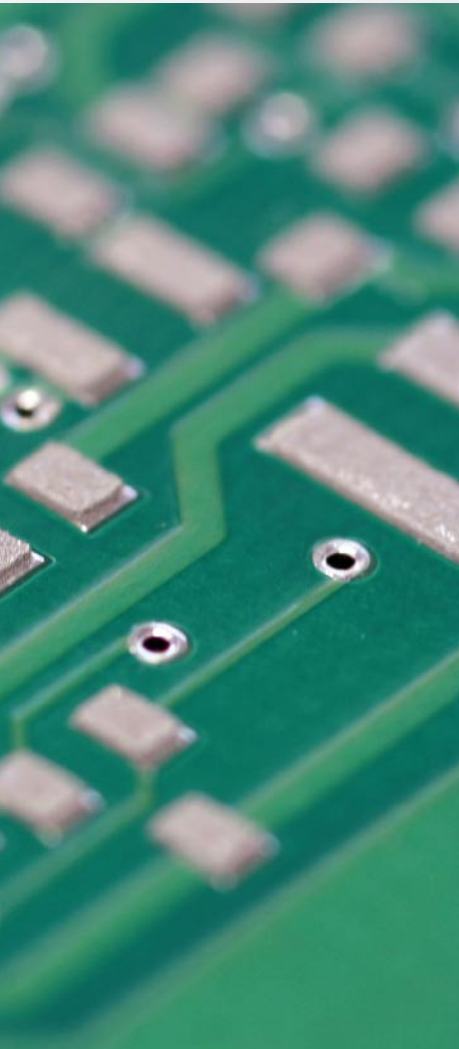
## *Easy operation and reliability in a small footprint*

### **Precise adjustment and repeatable printing**

Fino makes it easy for the operator to print accurate and reproducible fine structures in a small footprint. Stencil alignment is precise and fast. A dual vision system with laser pointers supports the operator during the alignment. All printing parameters are software-controlled and can be saved if required.

### **Flexible and quick changeover**

A universal frame fixation system allows the use of different screen or stencil tension frames. Fast clamping systems for different sizes are also available. The easy access to the printing area makes stencil cleaning and changeovers convenient.



## ESSEMTEC WORLDWIDE

● **Essemtec AG**

Mosenstrasse 20  
CH-6287 Aesch/LU  
Switzerland  
Phone: +41 (0) 41 919 60 60  
info@essemtec.com

● **Essemtec Germany**

Starnberg / Munich  
Phone: +49 (0) 8151 268 55 01  
info@essemtec.de

● **Essemtec Benelux**

Herselt, Belgium  
Phone: +32 (0) 16 436 742  
info@essemtec.be

● **Essemtec France**

Bogève, France  
Phone: +33 (0) 960 10 39 58  
info@essemtec-france.com

● **Essemtec Poland**

Warsaw, Poland  
Phone: +48 (0) 661 922 962  
sales-poland@essemtec.com



● **Essemtec USA**

Glassboro, NJ + Phoenix, AZ  
Phone: +1 / 856 218 1131  
sales@essemtec-usa.com

● **Essemtec Brazil**

Campinas / São Paulo  
Phone: +55 / 19 3324 2452  
sales-brazil@essemtec.com

● **Essemtec India**

Delhi + Bangalore  
Phone: +91 (0) 9880 795 227  
sales@essemtec-india.com

● **Essemtec Asia**

Singapore  
Phone: +41 (0) 79 729 10 10  
sales-asia@essemtec.com

For a complete list of all representatives and more product information please visit our website:

[www.essemtec.com](http://www.essemtec.com)

Your local Essemtec partner:

**RCAB**

+46 (0) 70 582 04 51  
info@rc-ab.se  
www.rc-ab.se

Become a fan:

twitter

facebook

YouTube

**essemtec**

swiss made